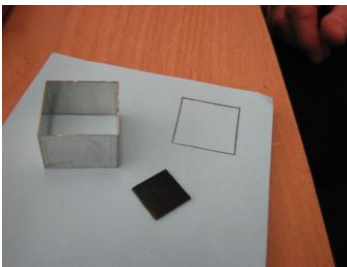


Three types of cufflinks using Embeddable Cufflinks

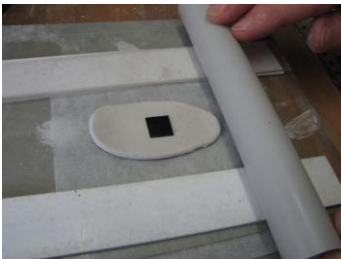


Using embeddable cufflink findings makes it easy to create a pair of quick and easy cufflinks without the hassle of soldering!

ENAMEL CUFFLINKS



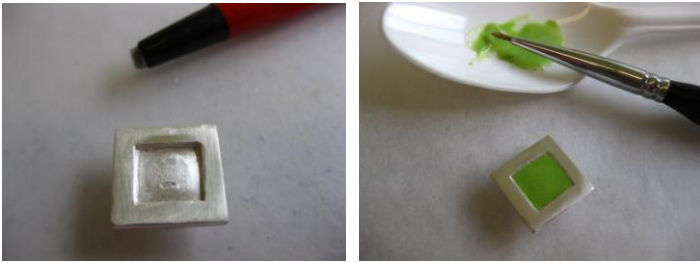
Step One: Put a 13mm square cutter aside and on a piece of .5mm thick cardboard or plastic mat (I used black thin acrylic sheet), draw a 10mm square. Cut out the 10mm square.



Step Two: Using the 1.5mm and 1.0mm plastic strips combined, roll out your clay to 2.5mm thick. Place your .5mm thick square on top and roll again so it embeds in the clay. Then use your 13mm square cutter to cut out evenly around the 1.0mm square (leaving a 3mm edge).



Step Three: Flip the whole square over keeping the insert in place. Centre the embeddable base of the cufflink. Press gently down with tweezers so the clay touches the top of the bottom, of the embeddable base. Dry (with the cut out still inside), remove the cut out, sand and fire.



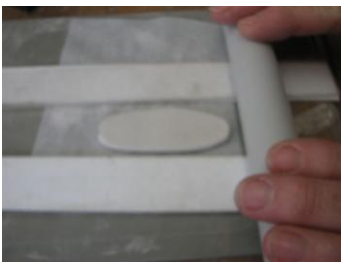
Step Four: Polish the fired square and clean thoroughly with a glass brush or scotchbrite pad with baking soda and water. Place some enamel in a clean plastic spoon or dish and add a couple of drops of water. Using a fine paint brush or toothpick, 'wetpack' the enamel in to the cufflink and allow to dry.



Step Five: Fire the enamel for approx 2 minutes at 800oC adding another layer, if necessary and re firing. Polish again. Use flat pliers to squeeze the embeddable base to the top part of the cufflink finding.



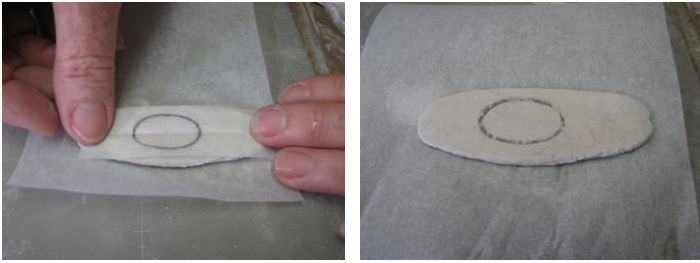
OXIDISED CUFFLINKS



Step One: Draw an oval template on baking paper approx 2.5 x 1.5cm with a pencil. Set aside. Roll out your clay using the 1.5mm and 1.0mm strips to make a total of 2.5mm in depth.



Step Two: Lightly roll the 2.5mm thick clay out over the 'cat scratch' texture tile and then turn the clay over.



Step Three: Using your drawn oval template, place it pencil side down on to the clay and lightly rub. Remove. There should be a pencil mark of your template left on your clay.



Step Four: Use the clay scraper, needle tool or a craft knife to cut around the oval. Place the embeddable cufflink base in the centre. Make sure you place the base in the correct way. The length of the bar should be in line with the longest part of the cufflink. Dry, sand and fire.



Step Five: Brush your cufflinks with a stainless steel brush and then prepare some liver of sulphur. Dip in the sulphur until dark grey in colour and then wash under water with baking soda to clean. Dry and take off the excess liver of sulphur with some sandpaper. Polish with a soft cloth and silver polish.



RESIN CUFFLINKS



Step One: Roll out some clay using the 1.5mm strips and cut out a circle using a 20mm circle cutter. Roll out another piece of clay 1.5mm thick and then lightly roll this over the 'small dot' texture tile. Cut out another 20mm circle.



Step Two: Place a 10mm fine silver bezel cup upside down on the texture. Press down, all the way and gently remove, leaving a hole.



Step Three: Spray some water on to the plain bottom base and use your finger lightly to make it slippery. Place the texture top on top and press gently together. Then press in the fine silver bezel cup. Dry, sand and paste the side seam, sand and fire. The side seam must not be visible otherwise it will split apart during firing. Polish.



Step Four: Squeeze a small amount of P2 Jelly UVresin on to some non absorbent paper and also a 'dot' of your chosen colour.



Step Five: Use a palette knife to smear the colour and resin together. Use a toothpick to drop the resin in to the bezel cup to a height of approx 1.0mm. Cure under UV light for 4-5 minutes. Repeat the same process dropping another layer of colour and set. For the final layer, I used clear only and then set once more for 2-3 minutes.

